

BENLO[®]

BENTEC

Your Safety...Our Priority

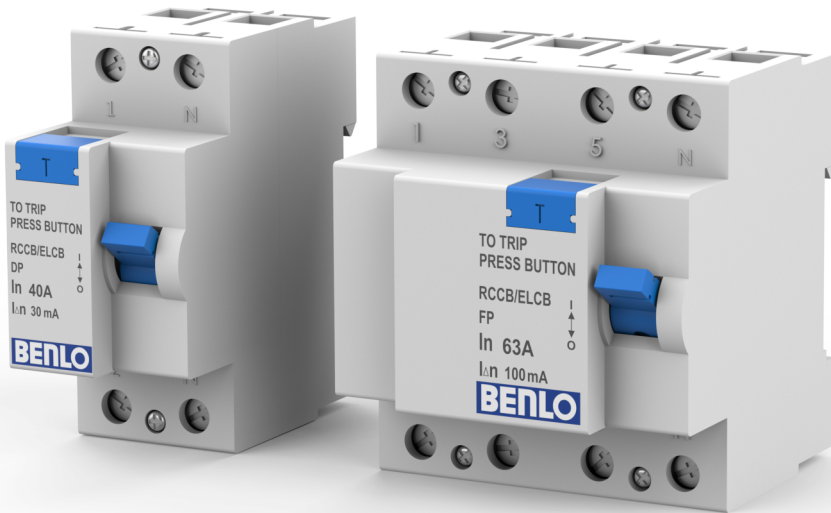


SMART METERS | SWITCHGEARS & DB's | WIRE & CABLES | SWITCHES & ACCESSORIES | LED

MCB- MINIATURE CIRCUIT BREAKER

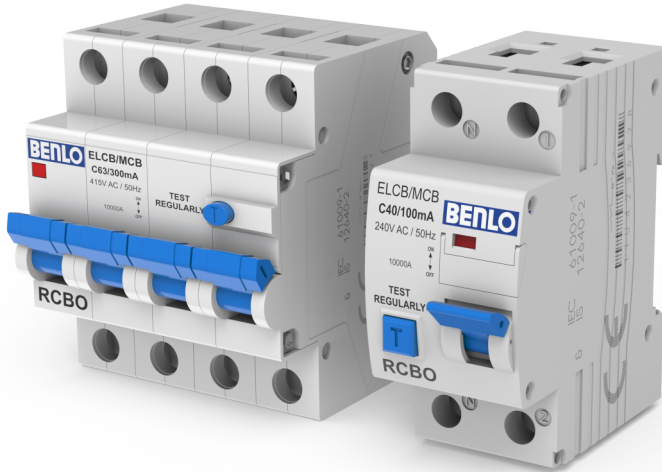
Meets latest Standards	
Ratings	0.5 Amp. to 63 Amp.
Poles	1P, 1P + N, 2P, 3P, 3P+N, 4P
Tripping Characteristic curve	B, C and D Type
Mid Trip Feature	
Rated Short Circuit Capacity	10,000 A
Compounded with hammer-tripping ensures low let through energy.	
Excellent discrimination with upstream and downstream breakers and fuses.	
Wide Range to suit different applications.	
Compact and Modular.	
Maintenance free as based on fuse less technology.	
Fire Retardant Body	

RCCB- RESIDUAL CURRENT CIRCUIT BREAKER



Meets latest Standards IS 12640 Part 1	
Module	Double Pole and Four pole
Current Ratings	10A, 16A, 25A, 32A, 40A and 63A
Sensitivity Rating	30,100 and 300 mA
Breaking capacity 10kA with short circuit protection device.	
Highly sensitive, detects earth leakage current as low as 30mA in less than 40mS	
Made of fire retardant, anti tracking non hygroscopic impact resistant material and can with stand high temperature.	
Incorporates advanced neutral, making it suitable to use a main switch.	
Opening and closing of all three phrases simultaneously due to rugged toggle mechanism.	
Fast acting and long life trip free mechanism due to self lubricating and high quality components.	
Incorporates 'T' button for periodic checking.	

RCBO- RESIDUAL CURRENT CIRCUIT BREAKER WITH OVER CURRENT PROTECTION



Conforms to IS 12640-2 and IEC 61009-1	
Module	Double Pole and Four pole
Current Ratings	16, 25, 32, 40 and 63A
Sensitivity Rating	30, 100 and 300mA
Rated voltage 240/415V AC Rated Impulse voltage 4kV	
Tripping Curve 'C' type, AC Class, IP 20	
Breaking capacity 10kA with short circuit protection device	
Line & Load reversibility available	
Electrical endurance 2000 switching cycles	
Incorporates advanced neutral, making it suitable to use as a main switch	
Highly sensitive, detects earth leakage current as low as 30mA in less than 40ms	
Made of fire retardant, anti tracking, non hygroscopic impact resistant material and can withstand high temperatures	
Opening and closing of all three phases simultaneously due to rugged toggle mechanism	
Fast acting and long life trip free mechanism due to self lubricating and high quality components	
Incorporates 'T' button for periodic checking.	
Din rail mounting	

ACCL - AUTOMATIC CHANGEOVER WITH CURRENT LIMITER



Range : 0.6Amp - 30Amp in SPN
Specification : IEC - 60947-6-1
Rated Voltage : 240V AC, 50Hz
Microcontroller based DIN rail mountable with neutral Isolation
Operational status indication through LED
Automatic generator on/off facility
Built-in time delay for fall safe changeover

MCO - MCB Changeover



Available in Double Pole & Four Pole
3-position DIN rail clip, permits removal from existing busbar system
Range-25, 32,40 & 63 A
Conforms to IS/IEC 60947-3
Voltage Rating 240 / 415V (AC), 50Hz
Front Operation with three stable positions I-O-II

DB'S- DISTRIBUTION BOARDS

Protection up to IP-43 as required.
Resistant against scratch, impact, weather and chemicals.
Easy cable entry and very spacious for wiring.
Suitable for surface or flush mounting.
Best quality sheet used for manufacturing.
Painted by hi-tech powder coating process.
Gasket to ensure weather proofness.
Provided with bus bar, neutral Link, earth bar, wire kits and blank plates.
Superior Finish to suit the style of your home decor.
Standard single/three phase DB: single phase neutral,transparent/acrylic,double door, consumer unit,three phase neutral, vertical, AC box.
Customized DB: phase selector , TV/telephone DB,flexy tier and socket box.
Cement guard

MCCB - MOULDED CASE CIRCUIT BREAKERS



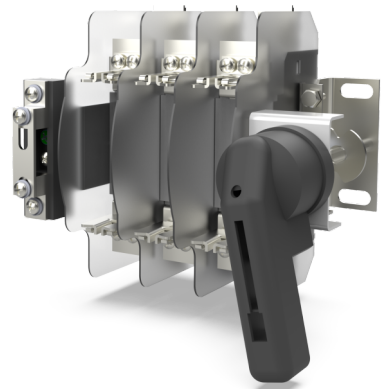
Conforms to IS / IEC 60947-2
Wide Range : 10A to 800A
Wide Range Breaking Capacity available from 10kA to 50kA
Both fixed and adjustable magnetic setting
Available in various frames sizes rated current from 10A to 800A
Line load reversibility available
High repeat accuracy-reliable protection
Push to trip button provision
Compact Dimensions
Type tested at Various labs
Positive isolation
Wide range of accessories
Current limiting design

ON LOAD CHANGEOVER SWITCH

Range 32 A- 3150A in 6 frame sizes Conforming to IS 60947 part 3
Available in 3P & 4P versions
4P with 100% Neutral and TPSN staggered neutral
Arc Chute plates to quench arc within the switch and also enhance contacts
Total safety with Terminal cover, Source Separator and Phase Barrier as standard feature
Mounting possible in both horizontal and vertical position
Available in Open Execution and Sheet Steel enclosures
Prewired Auxiliary contacts with 1NO 1NC

SWITCH DISCONNECTOR FUSE

Range : 32A to 800A, TP, TPN & 4 Pole, 415V, 50Hz
Confirms to latest IS 13947-3 / IEC 947-3
AC-23A duty
Multiple Roller Contact Mechanism for long life performance
Available in open execution and sheet steel enclosure
Available in BS & DIN type HRC fuse links
Excellent performance for capacitor duty applications.



LOAD BREAK SWITCH



Compact Design.
quick make and quick break mechanism.
Available in open execution & sheet steel enclosure.
Range 63A-630A 4 Pole AC-23A 415V
Confirms to IS-60947 Part -3

HRC FUSES AND BASES



Range 2A-630A
Conforms to IS: 13703:IEC 269
Breaking Capacity >80KA 415V, 50Hz AC
Low Watt Loss
Best Protective device at economical price.
Immediate fault indication.
Inter changeable with all compatible brands.

MAIN SWITCH

Range 16A, 32A, & 63A SPN 240Vac.
16A, 32A SPN 240Vac and 32A & 63A DP 415Vac.
32A, 63A, 100A, 200A & 320A, 500A TPN 415Vac.
Conforming to IS 60947 part 3
Surface mounting switch units for industrial & commercial applications
The Quick make-break mechanism independent of operators speed & provided with door interlock
Terminal Cover Shroud to prevent any accidental contact with live parts
Electrical contacts are made of Electrolytic Grade Copper, Silver Plated
The enclosures are surface mounted, made of thick gage CRCA sheets, Rust protected, Phosphatised

**BUSBAR**

Specifications—As per IEC : 61439-3/ IS-8623 & IEC-60529/ IS-2147

Rated operational voltage U_e 415/ 440 V AC

Incoming Current Rating (A) 16 A TO 300 A

Rated frequency (Hz) 50/60 Hz.

Rated S. C. Capacity withstand current (I_{cw}) up to 120kA

Rated peak withstand current up to 264kA

Degree of Protection IP-31

SINGLE PHASE & THREE PHASE ELECTRONIC ENERGY METER

Introduction

BENITEC has developed a range of advanced energy meters designed to cater various needs within residential, commercial and industrial segment consumers. These meters are characterized by their precision, reliability and advanced features that support modern energy management and conservation practices for Single phase & Three phase consumers.



TECHNICAL SPECIFICATION

Meter Type	Single Phase (Direct & Bi-Directional for Solar Rooftop)	Three Phase (Direct & Bi-Directional for Solar Rooftop)	Three Phase CT Operated
Rating	240V AC, 5-30A, 10-60A	3x240V AC, 5-30A, 10-60A, 20-100A	3x240V, -/5A
Standard Applicable	IS13779:2020, CBIP Report 325, IEC Standards	IS13779:2020, CBIP Report 325, IEC Standards	IS13779:2020, IS 14697 : 2021, CBIP Report 325, IEC Standards
Starting Current	0.4% of basic current (Ib)	0.4% of basic current (Ib)	0.2% of basic current
Accuracy	Class 1.0	Class 1.0	Class 1.0, Class 0.5
Display type	LCD Display	LCD Display	LCD Display
Power Consumption	As per IS13779	As per IS13779	As per IS13779 for CL 1.0 As per IS14697 for CL 0.5
Power Factor	Zero lag - Unity - Zero Lead	Zero lag - Unity - Zero Lead	Zero lag - Unity - Zero Lead
Temperature Range	-25°C to +55°C	-25°C to +55°C	-25°C to +55°C
Humidity	≤ 95% non-condensing	≤ 95% non-condensing	≤ 95% non-condensing
Frequency	50Hz ± 5%	50Hz ± 5%	50Hz ± 5%

ENERGY PARAMETERS

As per Customer Requirement

- ▶ Energy Parameters (kWh, kVA_{rh}, kVAh)
- ▶ Maximum Demand (kW, kVA_r, kVA)
- ▶ TOU : Up- to 8 Time Zones and Rate registers

ELECTRICAL PARAMETERS

As per Customer requirement

- ▶ Instantaneous Voltage
- ▶ Instantaneous Current
- ▶ Instantaneous Frequency
- ▶ Instantaneous Power Factor

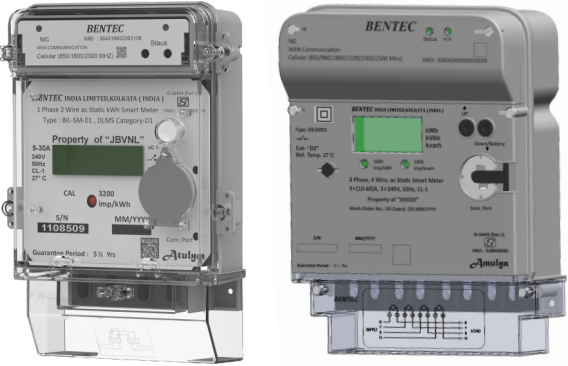
KEY FEATURES

- ▶ Communication Protocol : As per IS15959 (DLMS)
- ▶ Communication Port : Optical Port & RJ11
- ▶ Daily (midnight) & every 30/15 Min Load profile Data for 30/45/60 Days
- ▶ Power On-OFF event logging
- ▶ Meter reading provision in power OFF condition
- ▶ Anti-tamper Features : As per Indian Standards and Customer Requirement
- ▶ Four quadrant energy measurements
- ▶ 6/12 months billing history

SINGLE PHASE & THREE PHASE SMART METER

Introduction

Single Phase two wires and Three Phase four Wires Static Smart Meter are designed for residential and small commercial energy consumers. It offers accurate measurement, multifunction capabilities and robust anti-tamper features. The smart meter supports WAN (4G/NBLoT) or NAN (RF) communication technology in line with relevant BIS, ensuring seamless data transmission and integration with Advanced Metering Infrastructure (AMI) systems.



TECHNICAL SPECIFICATION

Rated Voltage : 3 x 240V (-40% to +20%)
Current Range : 5-30A, 10-60A, 20-100A
Accuracy Class : Class 1.0
Load Switch : UC1 or Better
Storage Temperature : -25°C to +70°C
Operating Temperature : -10°C to +55°C
Communication Protocol : IS15959/ DLMS
Communication Interface : Optical port, RS232, Bluetooth, NBLoT /4G (WAN) or RF (NAN)
Event Logging : As per IS 15959 and Customer Requirement
Metering : Four quadrant energy measurements
ToU : Up-to 08 Time Zones and Rate registers

KEY FEATURES

- ▶ Accurate Measurement : Complies with IS16444 Part-1, CBIP-325 and IEC standards
- ▶ Multifunction Display : LCD Display
- ▶ Alarms : Alert for power events, tamper events etc.
- ▶ Interoperability : Standard Communication protocol as per IS 15959 for seamless Integration
- ▶ Remote Communication : Enable remote bi-directional communication (Push & Pull method)
- ▶ OTA Updating : Enables updates remotely ensuring latest features and regulations compliances
- ▶ Real-Time Monitoring : Instantaneous insights of demand & quality help in load forecasting & Planning
- ▶ Anti-Tamper Features : Measure, Detect, record and report tampers to ensure data integrity & Accuracy
- ▶ Two-way Communication : Remote bi-directional communication enables on Demand and Push Mode
- ▶ Data Profile : Electrical energy multiple profiles helps in data monitoring, recording & optimization
- ▶ Remote Connect/Disconnect Facility
- ▶ 6/12 Month billing history
- ▶ Daily(Midnight) & Every 15/30Min. Load profile for 45/60 days

WIRES AND CABLES



ISI marked
Multistrand of 99.99% pure electrolytic grade annealed copper with 100% conductivity
Made with latest state-of-the-art technology giving total safety and consistent quality
Perfect stripping to crimping during installation due to uniform layup of conductor strands
Uniform centering of conductor wire in the PVC insulation, preventing short circuit occurrences due to uneven thickness and eccentricity of PVC insulation
Double layer virgin natural PVC insulation for better protection
All cables subject to high voltage spark test for elimination of weak spots in the insulation
High dielectric strength and resistance to DC Voltage effects
High mechanical strength and resistance to abrasion, vibration & ageing
Flame retardant, does not support combustion and self extinguishing
Specially formulated insulation that restrict toxic gases and smoke.
Suitable for use in conduit and for fixed protected installation in fire-prone areas.

LED

Input voltage range - 100V-300V
Elegant Structure to dissipate heat
Driver efficiency > 85%
Surge protection min 4KV to 10KV
High voltage Protection upto 440VAC
High Power factor > 0.90 To 0.98
High Lumen efficacy 100lm-120lm/W
Colour Rendering Index (CRI) > 70
CCT available 6500K, 5700K, 3000K,4000K
Total Harmonic Distortion (THD) >20% For Indoor and >10% for Out Door Products
Average Life upto 50000 Hours
All product is IP protected IP20 to IP66

SWITCHES



Positive action rocker switches with soft switching mechanism
Switches with X rating: designed for inductive and resistive loads
Arc Shield enclosure - Minimizes the visibility of arc
Switches with silver cadmium contacts for long life and continuity
All Socket designed with Child Safety Shutters
Solid Brass terminals for better conductivity
Captive Brass Screws for easy and fast installation
In regulators - Ergonomically designed knob with 360 Deg. Rotation
In regulators - 4 and 5 step fan controller with incremental steps across all steps
In regulator No radio frequency interference
Plates are engineered with front loading and removal features
High Grade flame retardant engineering plastic.

BENTEC

OUR MANUFACTURING FACILITIES OF PRODUCTS AT VARIOUS LOCATIONS AROUND THE COUNTRY

Unit - 1



BEHALA, KOLKATA
Products
Energy Meters

Unit - 2



KASBA, KOLKATA
Products
Distribution Boards,
Bus Bar, Main Switches
and Change over

Unit - 3



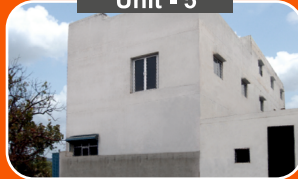
LILUAH, HOWRAH
Products
Wires & Cables

Unit - 4



FARIDABAD, HARYANA
Products
LED Lights,
Smart Meters

Unit - 5



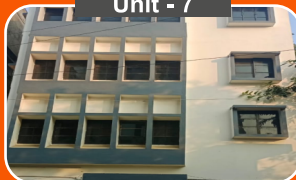
BADDI (HP)
Products
MCB, RCCB, MCCB, Tiny Trip,
MCB Changeover, Switch DIS connector,
Fuse, Load Break Switch,
HRC Fuse and bases, Motor Starter

Unit - 6



LILUAH, HOWRAH
Products
Fabrication and
Powder Coating Unit

Unit - 7



VASAI, MAHARASHTRA
Products
Modular Switches



Corporate Office
BENTEC INDIA LIMITED
150, Upen Banerjee Road,
Kolkata, West Bengal, Pin : 70060



info@bentecindia.com



Customer Care No.
033-24 01 74 21



bentecindia.com

BRANCH OFFICE

AHEMDABAD : 9669 099 969 | **ASANSOL** : 8250 552 792 | **BANGALORE** : 9845 007 857 | **BHAGALPUR** : 8789 817 707
BHUBANESWAR : 9831 281 573 | **CHENNAI** : 9748 013 248 | **GUWAHATI** : 9831 111 030 | **HYDERABAD** : 9831 194 283
INDORE : 9329 027 210 | **JAIPUR** : 9314 033 313 | **JALANDHAR** : 9915 800 483 | **LUCKNOW** : 9336133 222
MUMBAI : 9324287968 | **NAGPUR** : 9604 052 882 | **NASIK** : 9324 287 968 | **NOIDA** : 9950 227 722 | **PATNA** : 9903 000 780
PUNE : 9405 006 489 | **RAIPUR** : 9109 108 886 | **RANCHI** : 9386 588 496 | **ROHTAK** : 9315 326 004 | **RAJKOT** : 9669 099 969
SILIGURI : 9940 084 022 | **SURAT** : 9374 141 524 | **VARANASI** : 9554 966 555